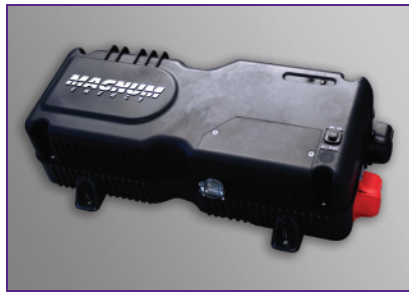




The MM Series Inverter/Charger For Mobile Applications



The MM Series Inverter/Charger is the cost effective solution for smaller power needs.



The Powerful Difference

Cost Effective Inverter/Chargers from Magnum Energy

Introducing the MM Series Inverter/Charger from Magnum Energy – a new modified sine wave inverter providing a cost effective solution for those with smaller power needs in mobile applications. Versatile, easy-to-use, and lightweight, the MM Series provides a reliable base for your energy system.

Safe and reliable: The MM Series is ETL Listed to the stringent requirements of UL/cUL 458 and CSA C22.2 #107.1-01 for mobile use.

Attractive styling: The modern, hourglass case, paired with the die cast aluminum base combines form with function, creating an attractive unit that uses its base as a heat sink for superior high temperature operation.

Features

You asked and Magnum listened.

The MM Series Inverter/Charger is loaded with features:

Choices: Not only does the MM Series come in two power models, but the series offers choices for AC input and output as well.

The MM Series offers the choice of an AC pigtail to plug into a dedicated outlet, or you can hardwire the unit directly from the AC breaker panel.

And choose from a built in 15 amp GFCI outlet or hardwire the AC output directly to a branch AC circuit.

Standard transfer relay:

The standard 7 or 16 amp, depending on model, transfer relay will pass AC power through the inverter when using shore or generator power.

Versatile mounting: Mount the MM Series on a shelf, bulkhead, or even upside down.

Fan cooled: The MM Series is fan cooled, enabling the unit to work well in confined spaces. If the inverter does exceed its temperature limits, it will automatically shut down and then restart when it cools down.

Low/high battery protection:

If your battery voltage reaches below 10 VDC or above 15.5 VDC, the MM Series will automatically shut down.

Current overload protection:

The MM Series will automatically shut down if its output wattage is exceeded or it detects a short in the wiring, saving the unit from costly damage.

Convenient switches: The MM Series comes with an on/off front-mounted switch with an easy-to-read LED indicator.

Circuit breaker protection: Every model comes with built in input and output circuit breakers for ease of installation.

Battery temp sensor: The standard battery temp sensor monitors temperatures from 0 - 50° C on all inverter models with a charger.

Buy with ease: The MM Series is backed by a two-year (24-month) parts and labor warranty.

Accessories and Options*

Remote control: Optional remotes are available for the MM Series, including the MM-R, MM-RC, and the ME-RC. A four wire phone jack comes standard with the unit to connect the remote.

*For more detailed information and specifications on these accessories, please see the accessories data sheet.



The MM Series Inverter/Charger

Specifications

	MM612 / MM612G	MM1212
Inverter Specifications		
Input battery voltage range	9 to 15.5 VDC	9 to 15.5 VDC
Nominal AC output voltage	120 VAC \pm 5%	120 VAC \pm 5%
Output frequency and accuracy	60 Hz \pm 0.005%	60 Hz \pm 0.005%
1 msec surge current (amps AC)	27	42
100 msec surge current (amps AC)	11	23
5 sec surge power (real watts)	1100	2100
10 sec surge power (real watts)	1050	1900
30 sec surge power (real watts)	1000	1750
5 min surge power (real watts)	950	1450
30 min surge power (real watts)	675	1375
Continuous power output at 25° C (with 1.0 PF)	600 VA	1200 VA
Continuous current output	5 AAC	10 AAC
Rated input battery current	60 ADC	125 ADC
Inverter efficiency	95%	95%
Transfer time	16 msec	16 msec
No Load (120 VAC output)	.77 ADC	1.3 ADC
Waveform	Modified Sine Wave	Modified Sine Wave
Charger Specifications		
Continuous output at 25° C	NA	70 ADC
Charger efficiency	NA	88%
Power factor	NA	> 0.95
Input current at rated output (AC amps)	NA	9
General Features and Capabilities		
Transfer relay capability	7 AAC	12 AAC
Battery temperature compensation	Yes, on models with chargers: standard temp sensor (battery temp 0 – 50° C)	
Remote available (optional)	Yes, MM-R or ME-RC	Yes, MM-RC or ME-RC
Internal cooling	0 to 59 cfm variable speed	
Overcurrent protection	Yes, with two overlapping circuits	
Overtemperature protection	Yes on transformer and MOSFETS	
On/Off with status indicator	Yes, front mounted and easily accessible	
Low battery cutout	10 VDC, adjustable on most models with the ME-RC remote	
AC output and input	Hardwire, G - GFCL / cord	Hardwire
Output circuit breaker	7 A switchable	12 A switchable
Input circuit breaker	7 AAC	16 AAC
Listings	ETL Listed to UL/cUL458, CSA C22.2 #107.1-01	
Warranty	Two years	
Environmental Specifications		
Operating temperature	-20° C to +60° C (-4° F to 140° F)	
Nonoperating temperature	-40° C to +70° C (-40° F to 158° F)	
Operating humidity	0 to 95% RH non condensing	
Physical Specifications		
Dimensions (l x w x h)	16.6" x 8.4" x 4.7" (42 cm x 21 cm x 12 cm)	
Mounting	Shelf (top or bottom up) or bulkhead (vents up)	
Weight	14 lb (6.4 kg)	20 lb (9 kg)
Max operating altitude	15,000' (4570 m)	
Construction	ABS plastic top and cast aluminum bottom	

Magnum Energy, Inc.
1111 80th Street SW, Suite 250
Everett, Washington 98203 USA

Phone: 425-353-8833
Fax: 425-353-8390
Web: www.magnumenergy.com

Testing for specifications at 25° C
Specifications subject to change without notice.
June 2006, Rev A Part #64-0400

Authorized Magnum Dealer

The Powerful Difference